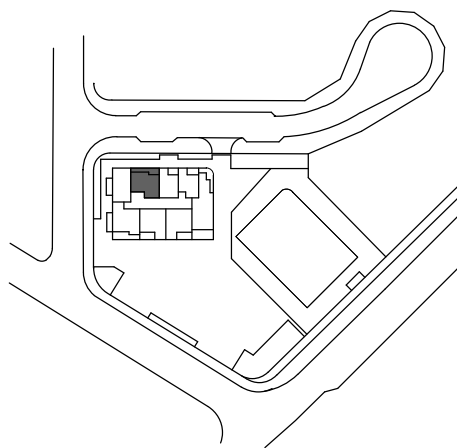


LEVEL 4,5,6,7,8,9,11,13,15,17

- LOT No. - 1048  
 1058  
 1068  
 1078  
 1088  
 1098  
 1118  
 1138  
 1158  
 1178

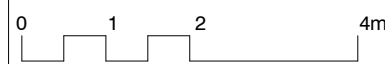
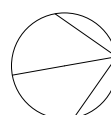
LOCATION PLAN



2 BEDROOM APARTMENT

Internal Area	77 m <sup>2</sup>
Balcony Area	19 m <sup>2</sup>
<b>Total Area</b>	<b>96 m<sup>2</sup></b>

Areas subject to final survey, area includes balcony and/or terrace where applicable. It excludes parking and external storage areas.



Please note that this floor plan was produced prior to completion of construction. The information contained herein is believed to be correct but is not guaranteed. Dimensions and areas are approximate. Changes will undoubtedly be made during development and subject to change without notice in accordance with the provision of the contract for sale. The furniture and furnishings depicted are not included with any sale and furnishings should not be taken to indicate the final position of power points, TV connection points and the like, prospective purchasers must refer to the contract for sale for the list of inclusions. All graphics, including tile layout, balustrades, planting, louvres and sunshading devices, are indicative only.  
 NOTE : Bulkheads necessary for services are not depicted. Floor plans are at an unspecified scale. Plans do not show additional features within each lot such as hot water systems, service yards, letterboxes and side and rear retaining walls. Purchaser option noted on floor plans is located on some lots only and is available at purchaser cost only at time of sale 06.05.2014[A]

Note:  
 SC indicates services cupboard.  
 \* Sliding Screen

For further enquiries  
 call 07 3852 9797 or visit  
 unisonbymirvac.com

